

LINOVISION

Long-Range Outdoor PoE + Data Extender
(Up to 2600ft)

Quick Guide (POE-EXT3001LP)



Quick Guide

Overview

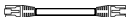
POE-EXT3001LP is a 100Mbps outdoor PoE extender designed for long-distance power and data transmission. It features 2 × 10/100Mbps RJ45 ports—one for PoE input and one for PoE output—allowing plug-and-play extension of PoE and Ethernet up to 2600ft (800m) when using two units in Paired Mode. No external power supply is required. Built with IP67 waterproof housing and wide operating temperature ($-10^{\circ}\text{C} \sim 50^{\circ}\text{C}$), it is ideal for harsh outdoor deployments where standard PoE distance is insufficient.

Note: This PoE extender is designed to extend PoE & Data transmission for PoE Device only. To use it with Non-PoE device, please activate this PoE Extender by connecting a standard PoE device first.

Package Contents



POE-EXT3001LP

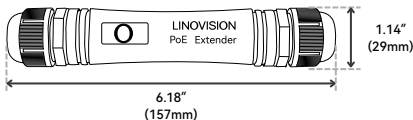


Network Cable

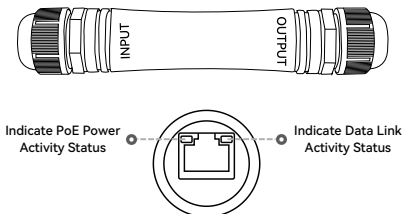


Quick Guide

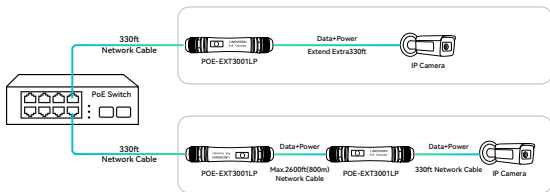
Dimension



Interface



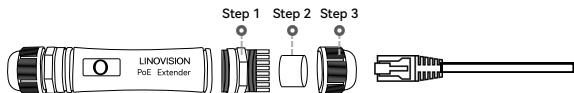
Application Diagram



Paired Mode

- Two POE-EXT3001LP will automatically be in Paired Mode when two INPUT Ports (Green) are connected directly.
- In Paired Mode, the max. PoE transmission distance is 2600ft or 800 meters (bandwidth will be lowered to 10Mbps after 1960ft or 600 meters)

Installation



Specification

Mode	POE-EXT3001LP
Standard	IEEE802.3, IEEE802.3u, IEEE802.3ab, IEEE802.3x, IEEE802.3af, IEEE802.3at
Port	2*10/100Mbps RJ45 ports
Network Medium	10BASE-T: Category 3, 4, 5 unshielded twisted pair (≤100 meters) 100BASE-TX: Category 5 and above unshielded twisted pair (≤100 meters)
Power Supply	PoE power supply/pass-through
POE Pin Assignment	1/2 (+) 3/6 (-) ; 4/5 (+) 7/8 (-)
Dimension	6.18"x1.14"x1.14" (157*29*29mm)
Operating Temperature	14°F ~ 131°F (-10°C ~ 55°C)
Storage Temperature	-40°F~158°F (-40°C ~ 70°C)
Working Humidity	10%~90%
Storage Humidity	5%~90%
MTBF	>100000 hours
Waterproof Level	IP67