

## POE-SP01F

Mini PoE Fiber Media Converter



### Outstanding Features

- **Gigabit Fiber Media Converter:** Converts RJ45 Ethernet to SFP fiber, supporting 10/100/1000Mbps auto-negotiation for stable, high-speed gigabit transmission.
- **RJ45 to SFP Fiber Conversion:** Equipped with 1×RJ45 port and 1×SFP slot, supporting different SFP modules for various fiber types and transmission distances.
- **PoE PD and Type-C Dual Power Input:** Powered via IEEE 802.3af/at PoE PD or Type-C input, enabling flexible deployment in remote locations without local power sources.
- **Long Distance Fiber Network Extension:** Extends Ethernet networks over fiber for long-distance connectivity across buildings, factories, and outdoor environments.
- **Mini Compact & Plug-and-Play Design:** Ultra-compact form factor (80×24×20mm) fits easily into wall mounts and enclosures, enabling quick installation without additional configuration.
- **Advanced Network:** Supports IEEE 802.1Q VLAN pass-through with broadcast storm protection and error detection. Auto MDI/MDIX and auto-negotiation ensure stable and seamless network connectivity.
- **Industrial-Grade Design:** Rugged metal housing with fanless design and wide temperature operation from -40°C to +85°C, ensuring reliable performance in industrial environments.

## Specification

Ethernet Interface	
Interface Type	RJ45
Transmission Rate	10/100/1000 Mbps
Duplex Mode	Full Duplex / Half Duplex Auto Negotiation
Protocol	IEEE 802.3, IEEE 802.1Q (VLAN)
MAC Address Table	4096 entries
Cable Type	Cat5e / Cat6 or higher
MDI/MDI-X	Auto MDI/MDI-X supported
Fiber Interface	
Interface Type	SFP Slot
Fiber Standard	1000Base-SX / LX
Transmission Rate	1000 Mbps
Duplex Mode	Full Duplex
Wavelength	1310 nm / 1550 nm
VLAN Support	IEEE 802.1Q
Transmission Distance	5 km – 120 km (depending on SFP module)
Power Supply	
PoE Input	IEEE 802.3af/at PD
External Power Input	Type-C
Input Voltage	DC 5 V
Power Consumption	≤ 5 W
Mechanical Specifications	
Dimensions (L × W × H)	80 × 24 × 20 mm (3.15 × 0.94 × 0.79 in)
Weight	81 g (0.179 lb)
Operating Temperature	-40°C ~ +85°C (-40°F ~ +185°F)
Storage Temperature	-40°C ~ +85°C (-40°F ~ +185°F)

*\*Disclaimer: Technical specifications may subject to change without prior notice*

Operating Humidity	0% ~ 95% (non-condensing)
MTBF	>100,000 hours

## LED Indicator

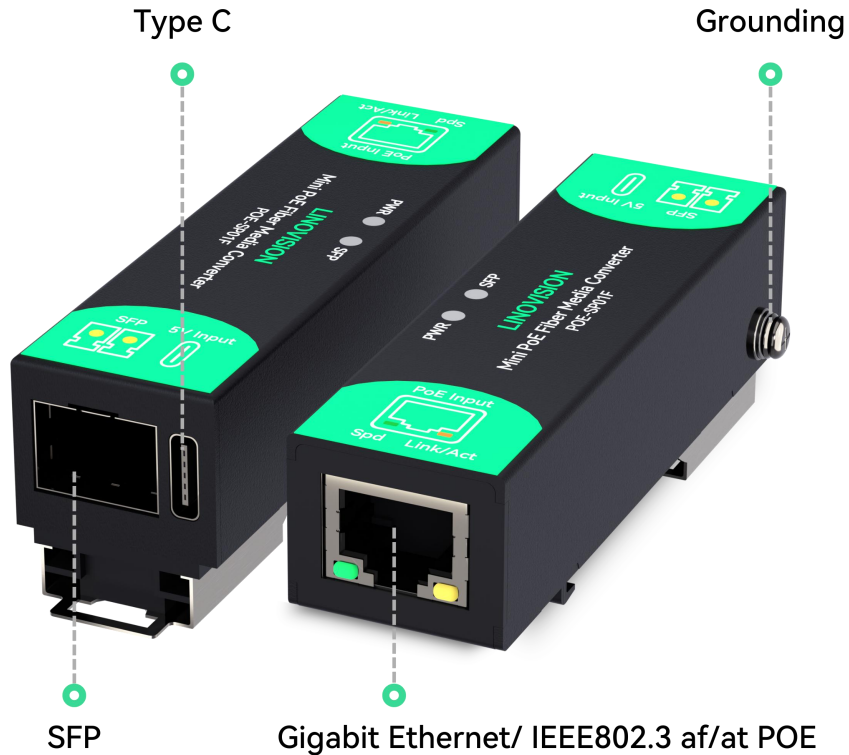
LED	Color	Status	Description
PWR	Green	On	Power is connected
		Off	No power
FIB	Green	On	Fiber port link established
		Flashing	Fiber data transmitting
		Off	Fiber link down
Link/Act	Green	On	Ethernet port connected
		Flashing	Ethernet data transmitting
		Off	Ethernet link down
SPD	Green	On	1000 Mbps connection
		Off	100 Mbps or no link

## RJ45 UTP Wiring Table

A-End RJ45 Connector		Straight Cable B-End Connector		Crossover Cable B-End Connector	
Pin No.	Twisted Pair Color	Pin No.	Twisted Pair Color	Pin No.	Twisted Pair Color
1	White/Orange	1	White/Orange	1	White/Green
2	Orange	2	Orange	2	Green
3	White/Green	3	White/Green	3	White/Orange
4	Blue	4	Blue	4	Blue
5	White/Blue	5	White/Blue	5	White/Blue
6	Green	6	Green	6	Orange
7	White/Brown	7	White/Brown	7	White/Brown
8	Brown	8	Brown	8	Brown

*\*Disclaimer: Technical specifications may subject to change without prior notice*

### Front & Back View

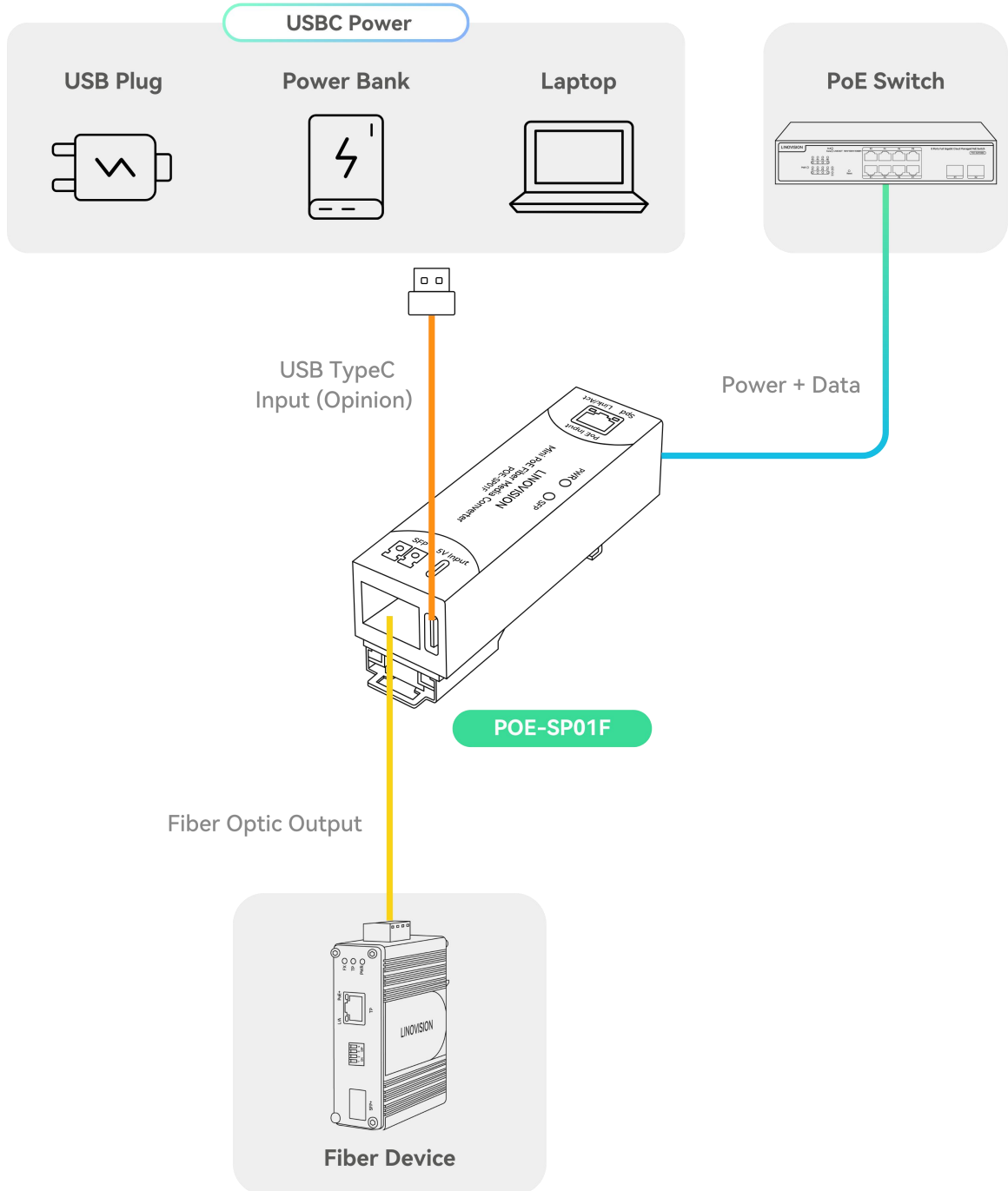


### Bottom View



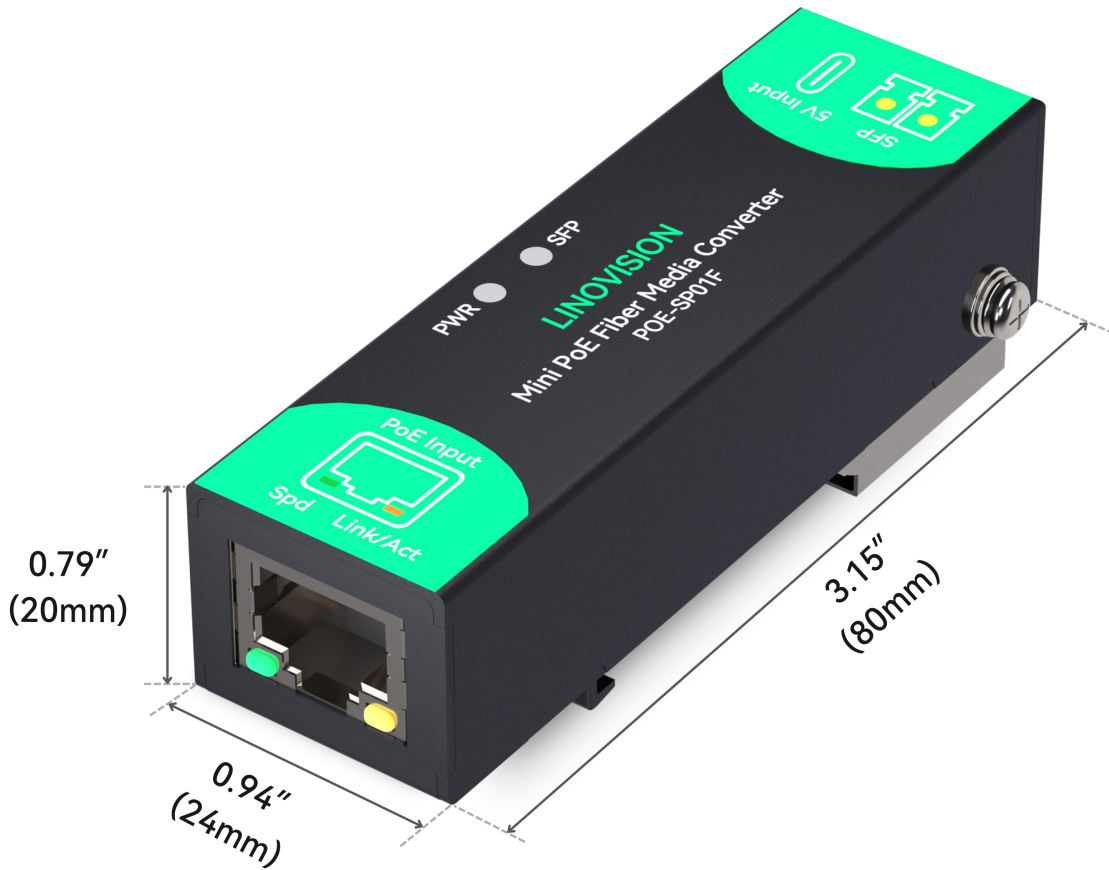
*\*Disclaimer: Technical specifications may subject to change without prior notice*

## Connection Diagram



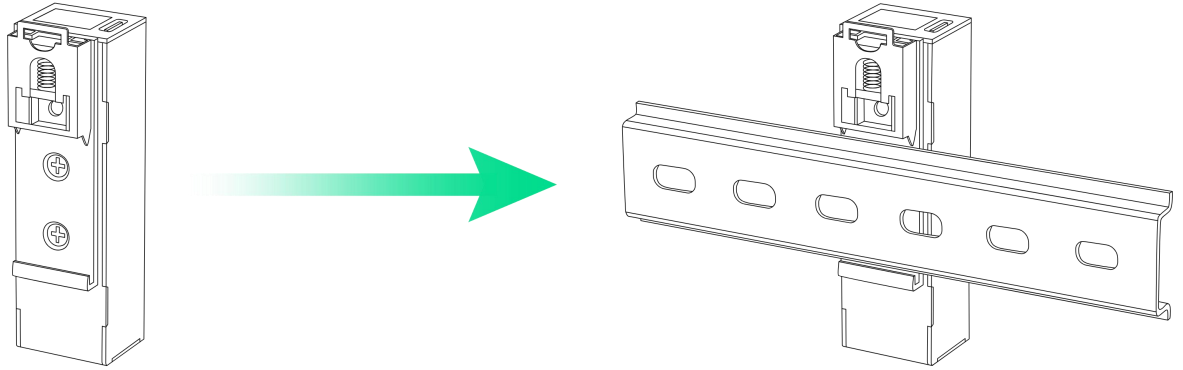
*\*Disclaimer: Technical specifications may subject to change without prior notice*

## Dimension

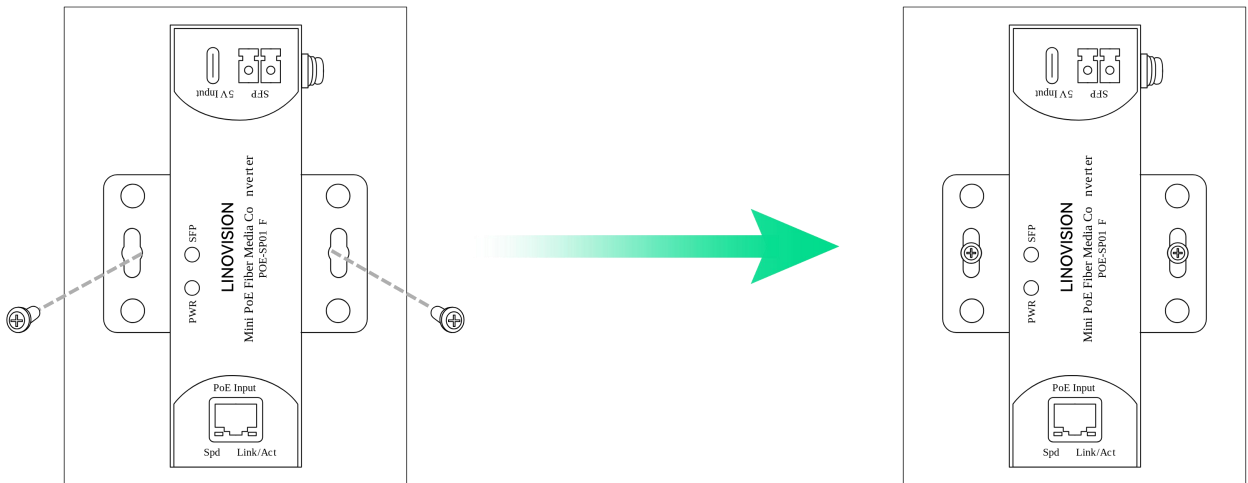


Weight: 81g (0.179lb)

## Installation



## DIN-rail Installation

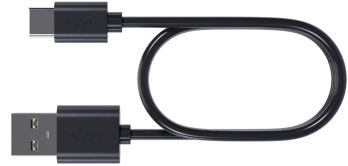


## Wall-mounting Installation

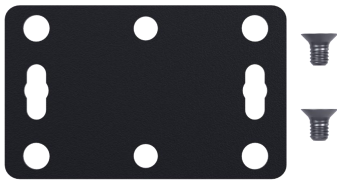
## Package Contents



POE-SP01F



Type-C USB Data



Wall Mounting Accessory



Quick Guide