

## POE-SW504GD

DC 9-57V Input Mini Solar PoE Switch with 2 PoE+ Ports, 1 High PoE+ Port and 1 Passive 24V PoE Port



### Outstanding Features

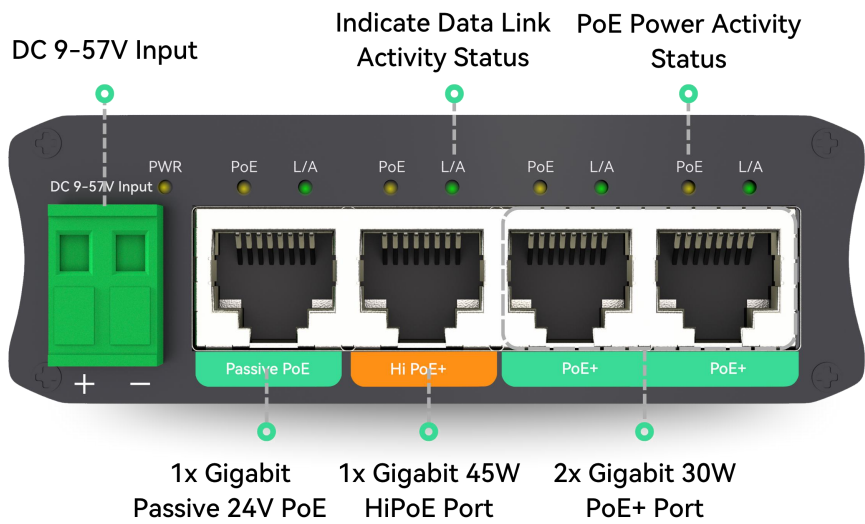
- Supports 9-57 V DC input with a built-in voltage booster, and provides 2 × IEEE 802.3af/at PoE+ ports, 1 × 45 W High PoE+ port, and 1 × 24 V passive PoE port.
- Rugged all-metal housing with DIN-rail mounting and compact dimensions of 83 × 26 × 64 mm (3.27 × 1.02 × 2.52 in), ideal for space-constrained environments such as electrical cabinets, solar control boxes, and outdoor enclosures.
- The 45 W High PoE+ port powers high-demand devices that exceed standard IEEE 802.3at output, including multi-sensor PTZ cameras, high-speed domes, and LED-illuminated models.
- The 24 V passive PoE port is ideal for wireless bridges and other passive PoE devices, eliminating the need for a separate injector.
- Delivers a total power budget of 60 W with 12 V input and 100 W with 24 V input, suitable for solar-powered, RV, and remote surveillance deployments.

## Specifications

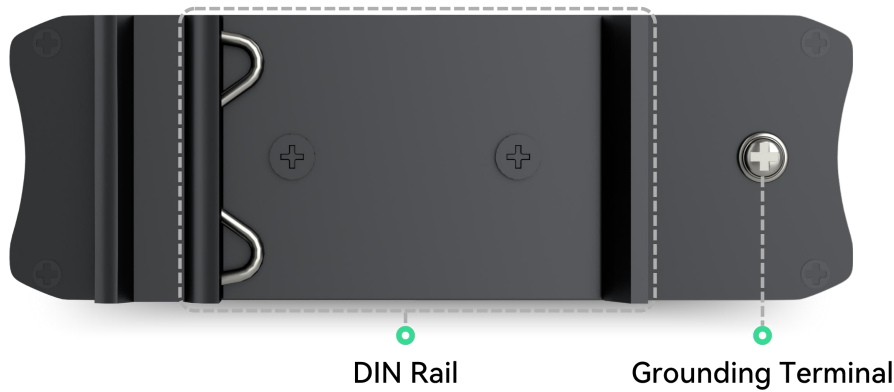
<b>Mechanical</b>	
Enclosure Material	Aluminum
Dimensions (WxDxH)	83 × 26 × 64 mm (3.27 × 1.02 × 2.52 in)
Weight	0.159 kg (0.35 lb)
Installation	DIN-rail
<b>Interface</b>	
Network	4 * 10/100/1000 Mbps RJ45 PoE Ports
DC Power Input	DC 9-57 V, 2-pin terminal block
<b>Ethernet</b>	
PoE Output Ports	Port 1-2: PoE+, IEEE 802.3af/at, Mode A (Pins 1/2 [+], 3/6 [-]) Port 3: High PoE+, IEEE 802.3af/at, up to 45 W, Mode A (Pins 1/2 [+], 3/6 [-]) Port 4: Passive PoE, 24 V, (Pins 4/5 [+], 7/8 [-])
PoE Power Budget	60 W (DC 12 V Input) 100 W (DC 24 V Input) 100 W (DC 48 V Input)
MAC Address Table	8K
Packet Buffer	1 Mbit
Packet Length	10 Kbytes
Switching Capacity	10 Gbps
<b>LED Indicators</b>	
PWR	Power
PoE	Power over Ethernet
L/A	Link/Activity
<b>Environment</b>	
Operating Temperature	-40 °C to 75 °C (-40 °F to 167 °F)
Storage Temperature	-40 °C to 85 °C (-40 °F to 185 °F)
Relative Humidity	0% to 95%, non-condensing
Surge Protection	±1.5 kV
Electrostatic Discharge	HBM ±2000 V, CDM ±750 V

Interface

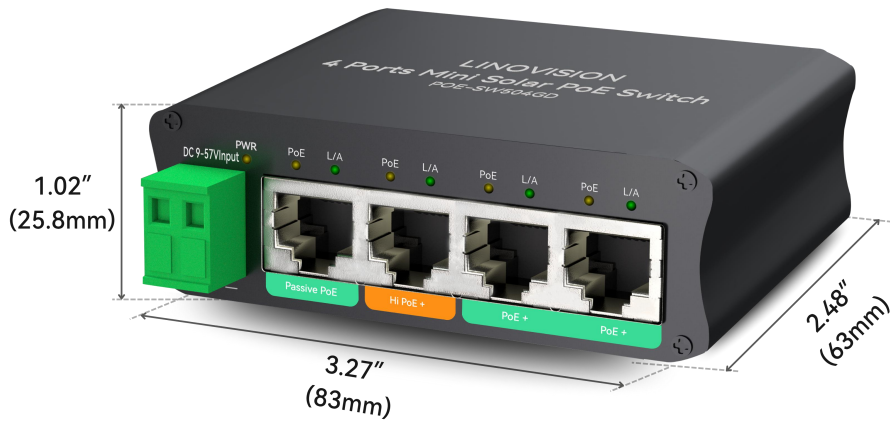
Front View



Rear View

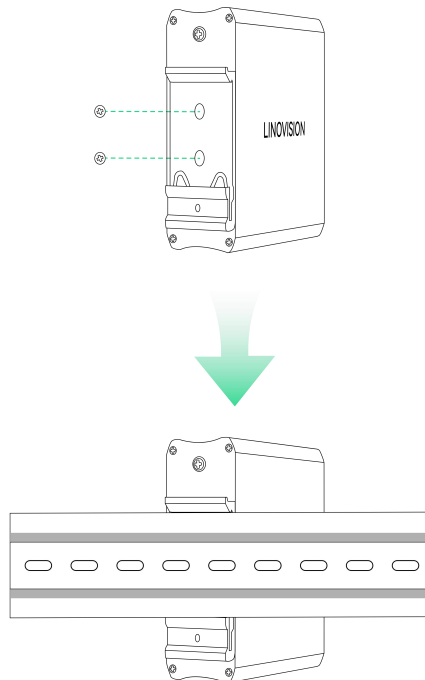


## Dimension



Weight: 159g (0.351 lb)

## Installation



Package Contents



POE-SW504GD



DIN-Rail Mounting Accessory



Quick Guide

*\*Disclaimer: Design and specifications are subject to changes without prior notice.*