

## POE-SW9632-L-M12

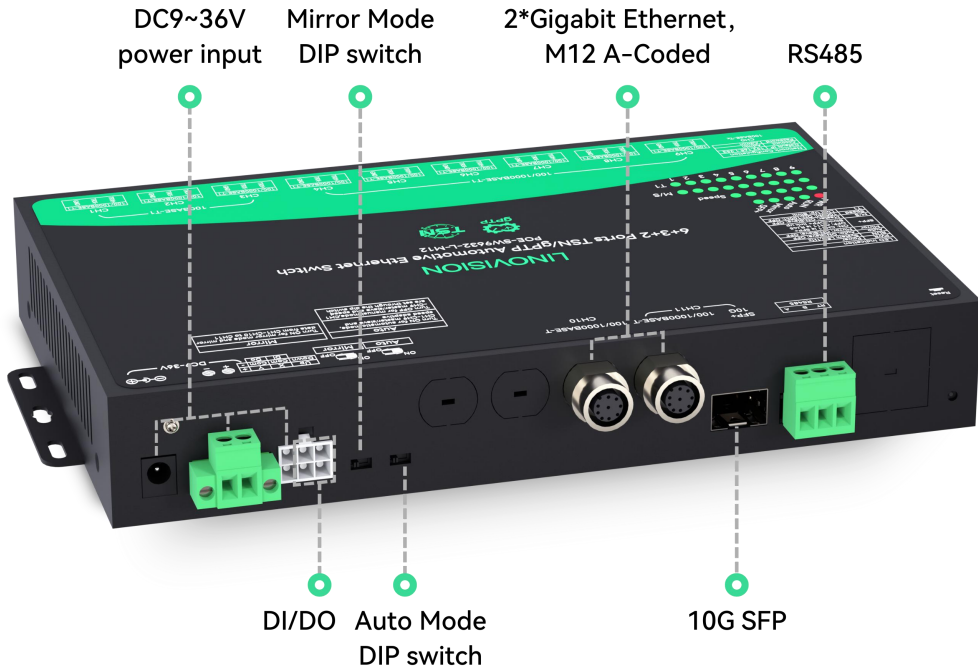
TSN gPTP Vehicle Ethernet switch



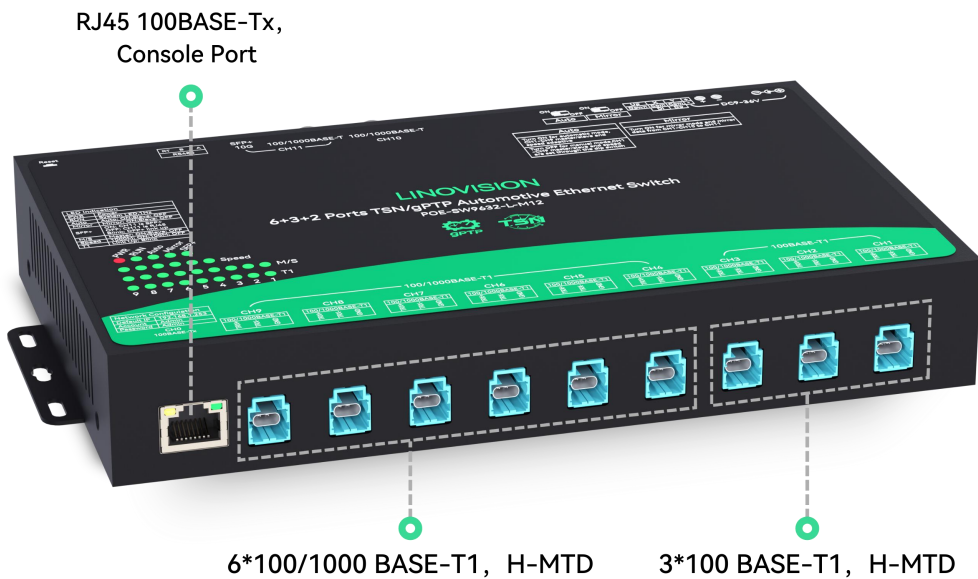
### Outstanding Features

- **Automotive Ethernet Test Switch:** Automotive Ethernet test switch for automotive Ethernet development, validation, and production testing, supporting essential L2 managed functions for controlled test networks.
- **TSN and IEEE 802.1AS gPTP Support:** Support for Time-Sensitive Networking (TSN) and IEEE 802.1AS gPTP to enable deterministic data transmission and precise time synchronization in automotive Ethernet test networks.
- **BASE-T1 Automotive Ethernet Connectivity:** 3×100BASE-T1 and 6×100/1000BASE-T1 ports with H-MTD connectors, featuring automatic master/slave role and speed negotiation for simplified multi-ECU and sensor testing.
- **Production-Oriented Test Functions:** Single-channel polling for testing multiple ECUs with the same IP address, combined with port mirroring for traffic monitoring and packet capture.
- **Gigabit Ethernet and 10G SFP+ Interfaces:** Two M12 Gigabit Ethernet interfaces and one 10G SFP+ interface provide flexible Ethernet connectivity, supporting external network access and high-bandwidth data forwarding in automotive Ethernet test systems.
- **Integrated DI / DO and RS485 Interfaces:** Integrated DI / DO and RS485 interfaces for basic control, status signaling, and serial communication with test fixtures and external devices.
- **Industrial-Grade Design:** Industrial-grade design with 9–36V wide voltage input, IP40 protection, –40°C to +85°C operating temperature, and vibration compliance with ISO 16750-3:2023, suitable for laboratory, production line, and automotive test environments.

### Top Panel

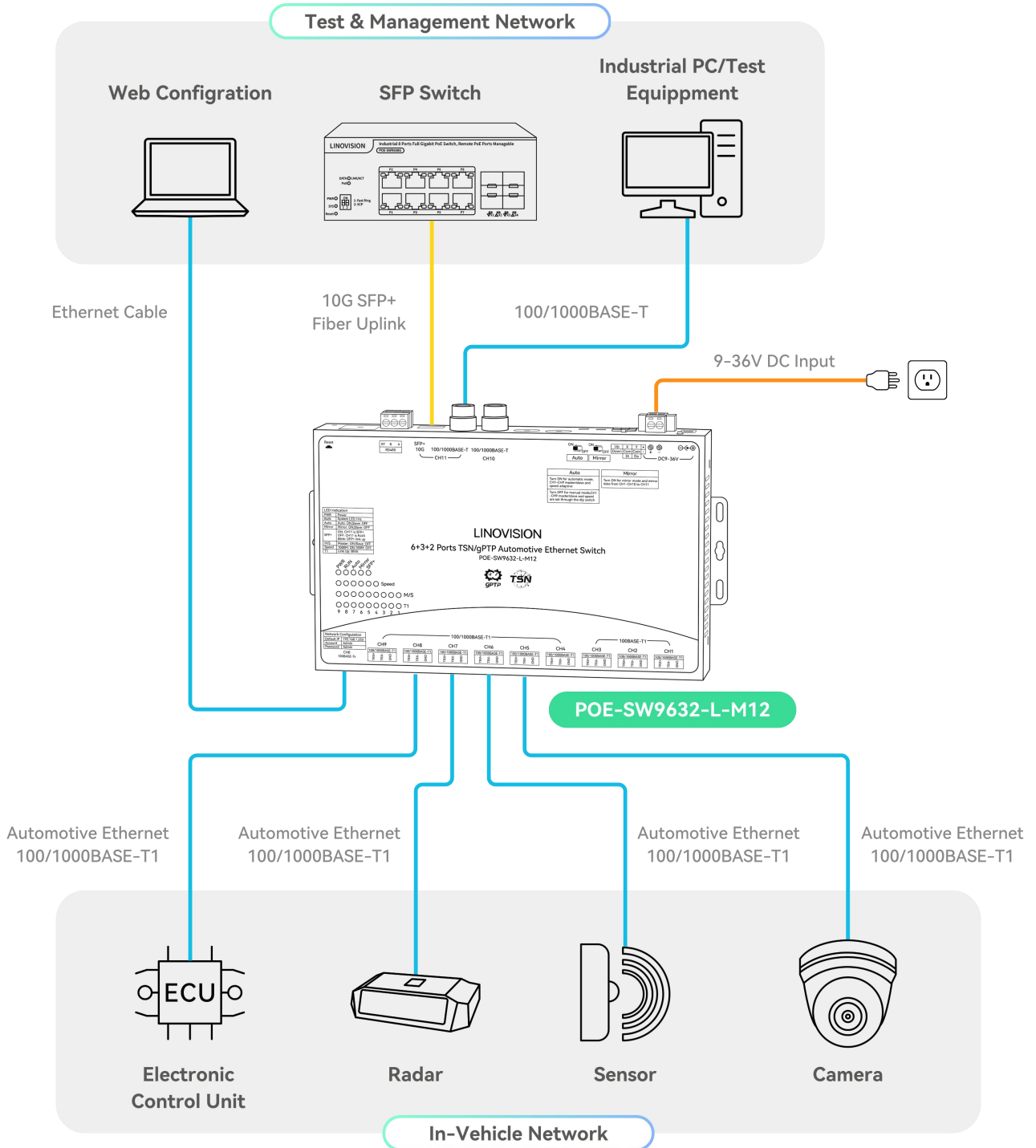


### Bottom Panel



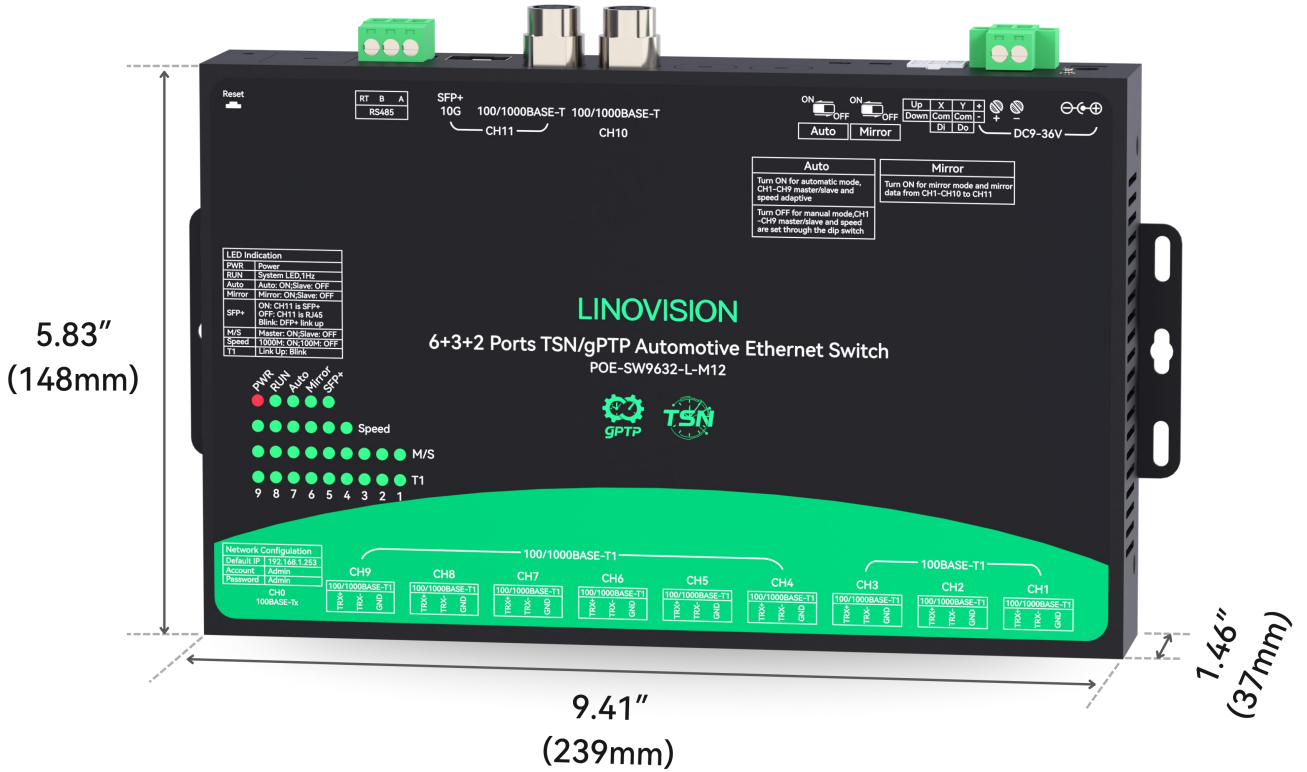
*\*Disclaimer: Technical specifications may subject to change without prior notice*

## Connection Diagram

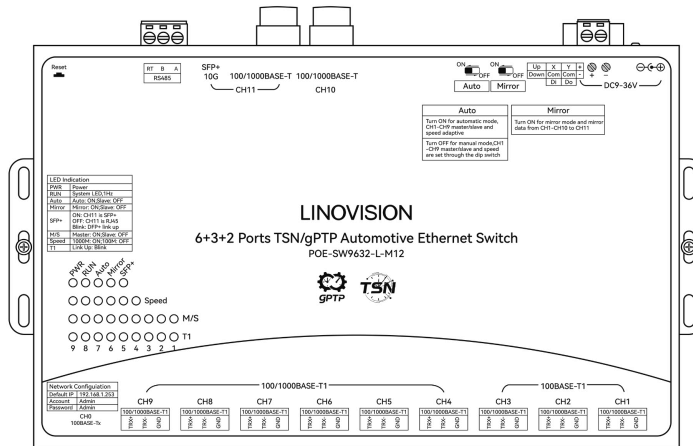
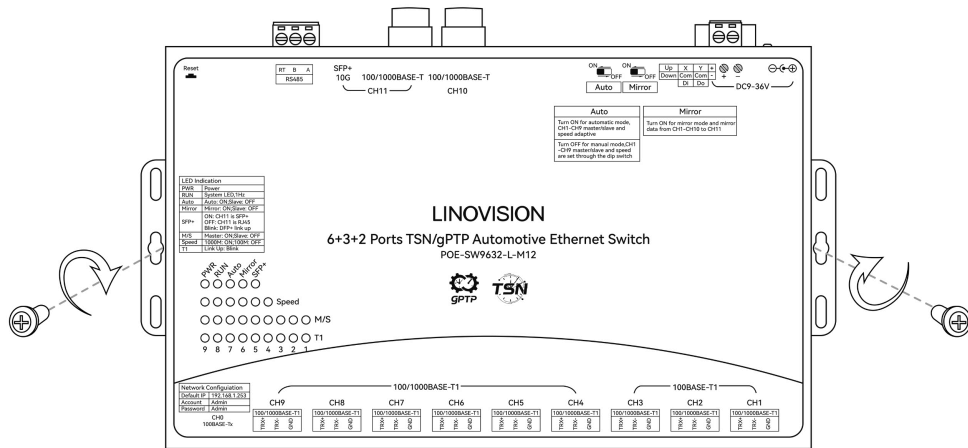


*\*Disclaimer: Technical specifications may subject to change without prior notice*

## Dimension



## Installation



Wall-mounting

## Package



POE-SW9632-L-M12



Power Cord



H-MTD cable



2\*M12 to RJ45 cables



Quick Guide

## Specification

<b>Interfaces</b>	
Dimensions (W × D × H)	239 × 148 × 37 mm (9.41 × 5.83 × 1.46 in)
Weight	1.15 kg (2.535 lb)
Automotive Ethernet (T1)	6 × 100/1000BASE-T1 3 × 100BASE-T1
Standard Ethernet	2 × 10/100/1000BASE-T (M12)
SFP+	1 × 10G SFP+ port
Configuration Port	1 × 100BASE-T (CH0)
CAN FD	2 × CAN FD (optional)
Serial Interface	1 × RS485
Digital I/O	1 × DI, 1 × DO
LED Indicators:	Power, System Status, Mode, Port Speed, Link/Activity, SFP+, Master/Slave, and T1 Ethernet Status.
<b>Power</b>	
Input Voltage	DC 9–36 V (reverse polarity protection)
Power Consumption	< 8 W
<b>Environmental</b>	
Operating Temperature	–40 °C to +85 °C
Operating Humidity	5% to 95% RH (non-condensing)
Ingress Protection	IP40
<b>EMC &amp; Reliability</b>	
Surge Protection	IEC 61000–4–5 (Power ±1 kV, Signal ±1 kV)
ESD Protection	IEC 61000–4–2 (Contact ±8 kV, Air ±15 kV)
EFT Protection	IEC 61000–4–4 (Power ±1 kV, Signal ±1 kV)
Salt Spray	48 hours
Shock Test	GB 4943.1–2022 (50 mm steel ball, 1300 mm drop)
Vibration Test	ISO 16750–3:2023

*\*Disclaimer: Technical specifications may subject to change without prior notice*